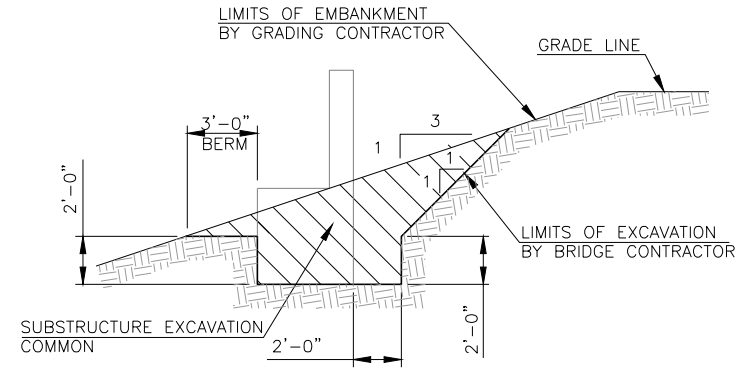
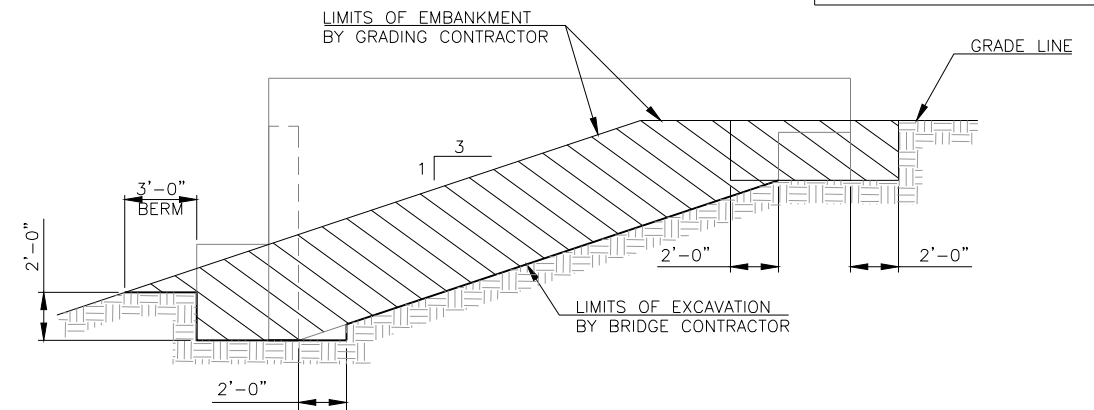


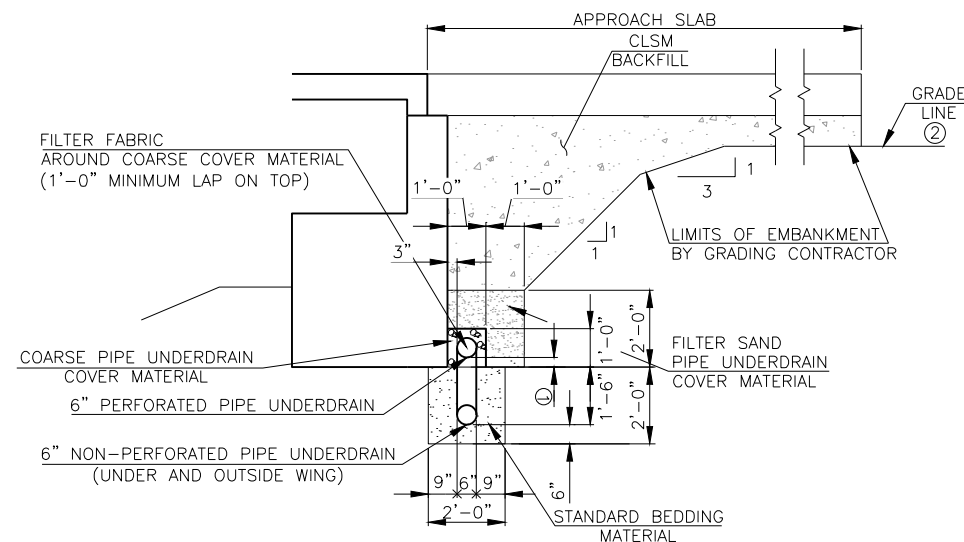
DESCRIPTION	REVISIONS	DATE



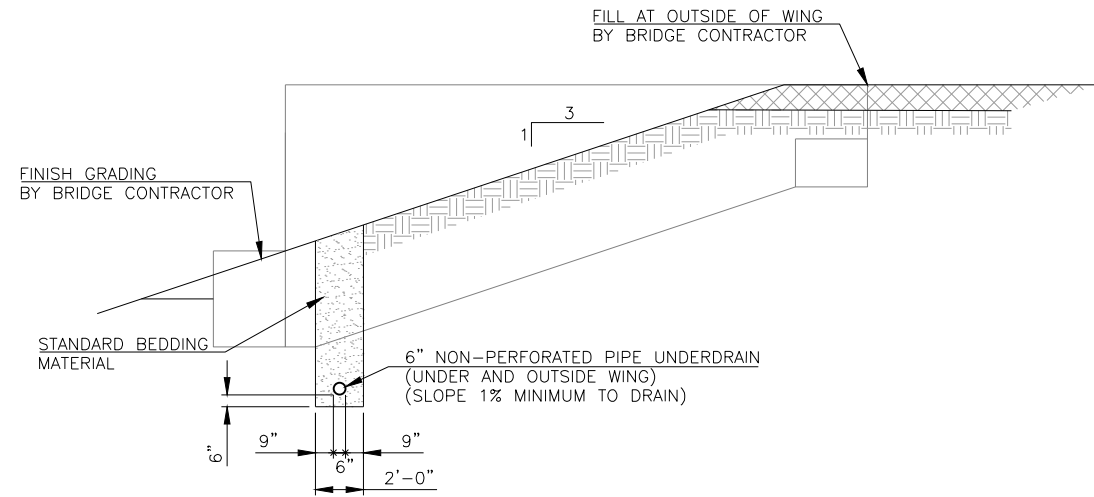
ABUTMENT NO. 2
SECTION A-A



ABUTMENT NO. 2
SECTION B-B



ABUTMENT NO. 2
SECTION E-E



ABUTMENT NO. 2
SECTION F-F

DO NOT PLACE CLSM BACKFILL UNTIL THE SUPERSTRUCTURE IS IN PLACE AND THE ABUTMENT WINGS HAVE ATTAINED A STRENGTH OF 3000 PSI.

- ① SET BOTTOM OF PIPE 3" ABOVE THE BOTTOM OF THE ABUTMENT AT LOW END.
- ② GRADE LINE ASSUMED TO BE LOCATED 12" BELOW BOTTOM OF APPROACH SLAB FOR COMPUTING CLSM BACKFILL QUANTITY SHOWN ON PLANS. THE DEPARTMENT WILL PAY FOR CLSM BACKFILL IN ACCORDANCE WITH THE PLAN QUANTITY AND NO ADJUSTMENT WILL BE MADE FOR ACTUAL LOCATION OF GRADE LINE.

DESIGN	B.J.K.	SH-48 OVER CIMARRON RIVER	CREEK COUNTY
DRAWN	E.B.R.	SUBSTRUCTURE EXCAVATION (SHEET 2 OF 2)	
CHECKED	B.J.K.		
APPROV.	B.J.K.		
SQUAD	CEC		
		JOB PIECE NO. 27925(04)	SHEET NO. 35